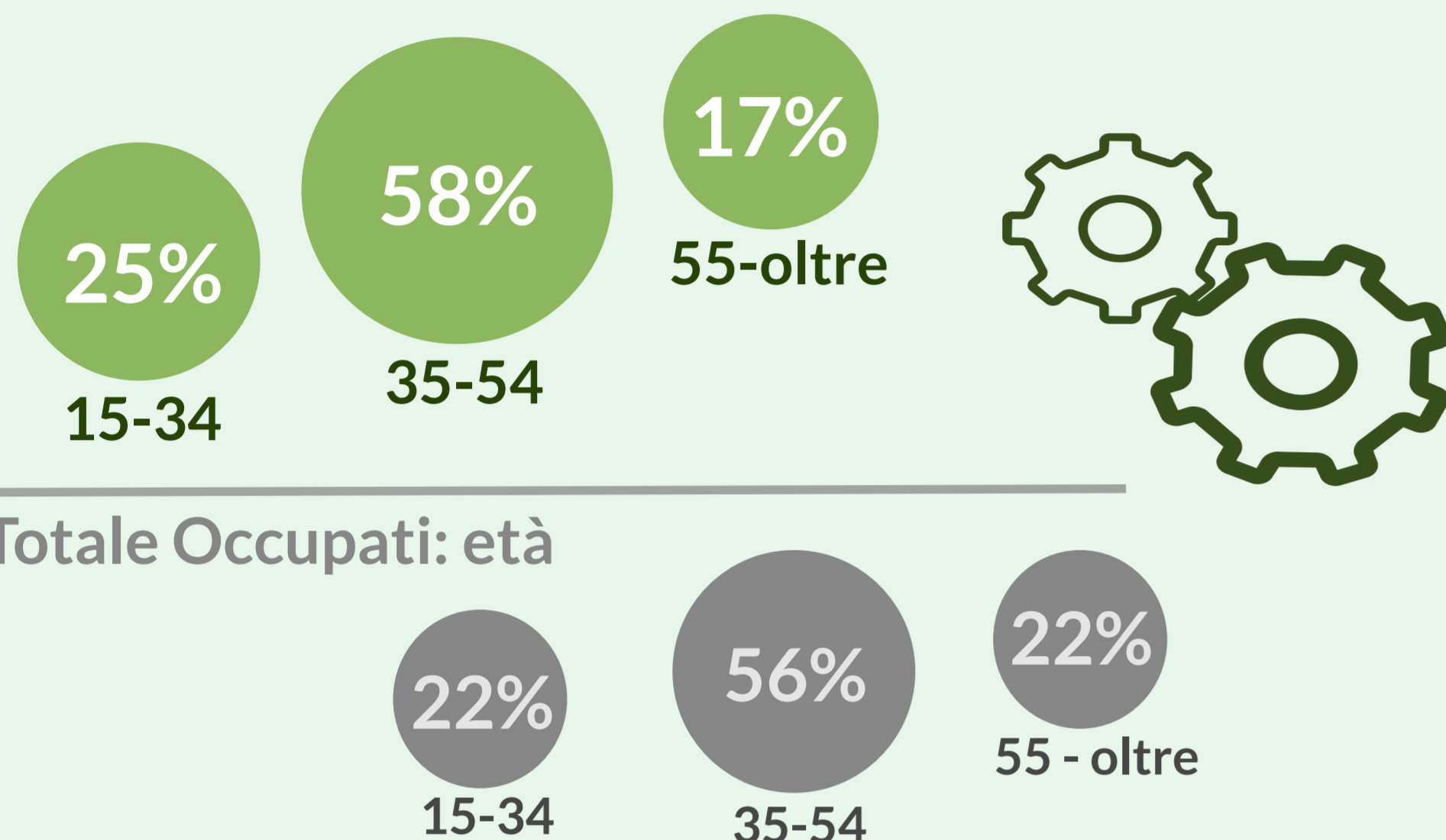


Meccanica, produzione e manutenzione di macchine, impiantistica

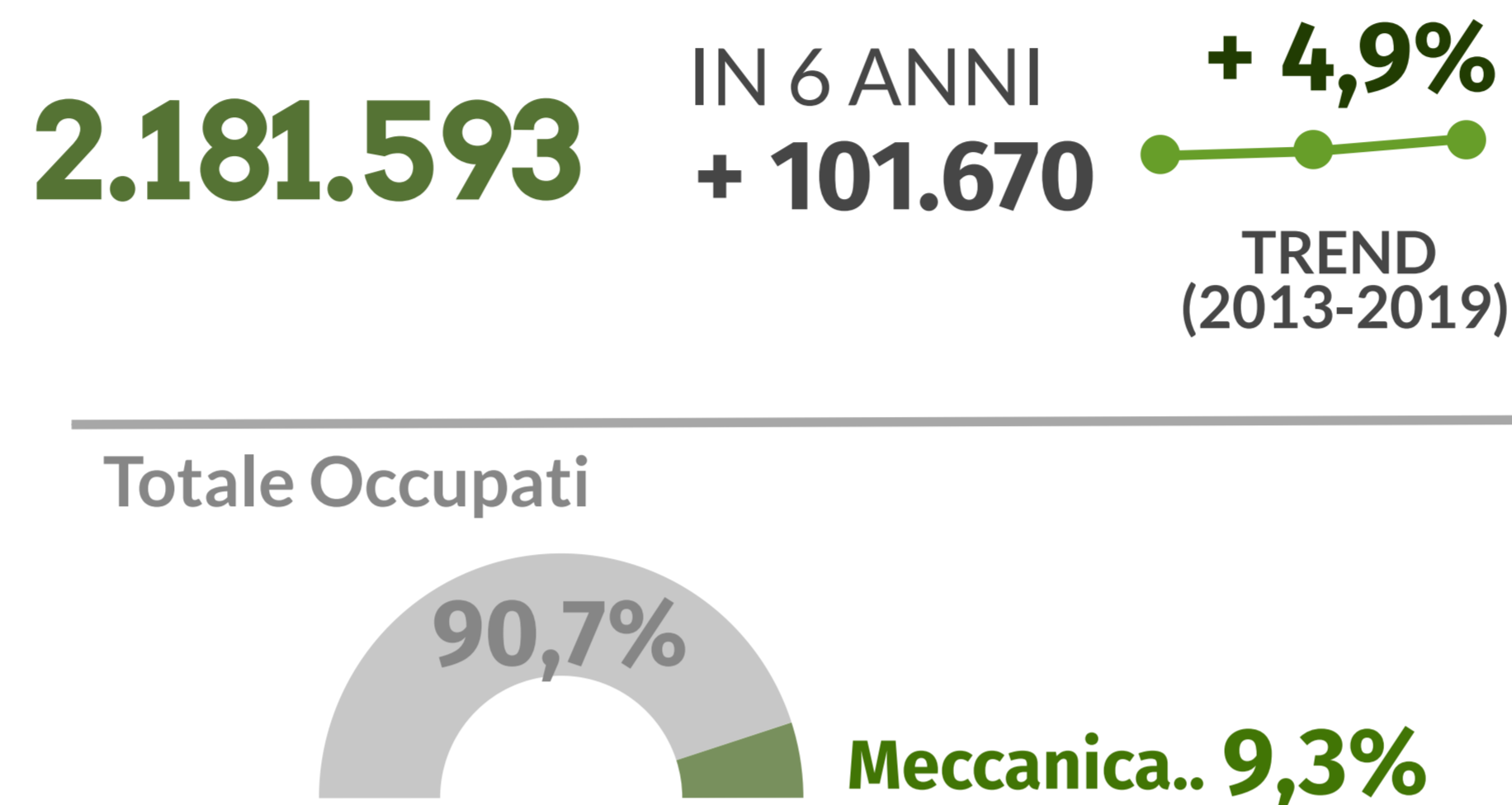
OCCUPAZIONE

ATLANTE DEL LAVORO
E DELLE QUALIFICAZIONI

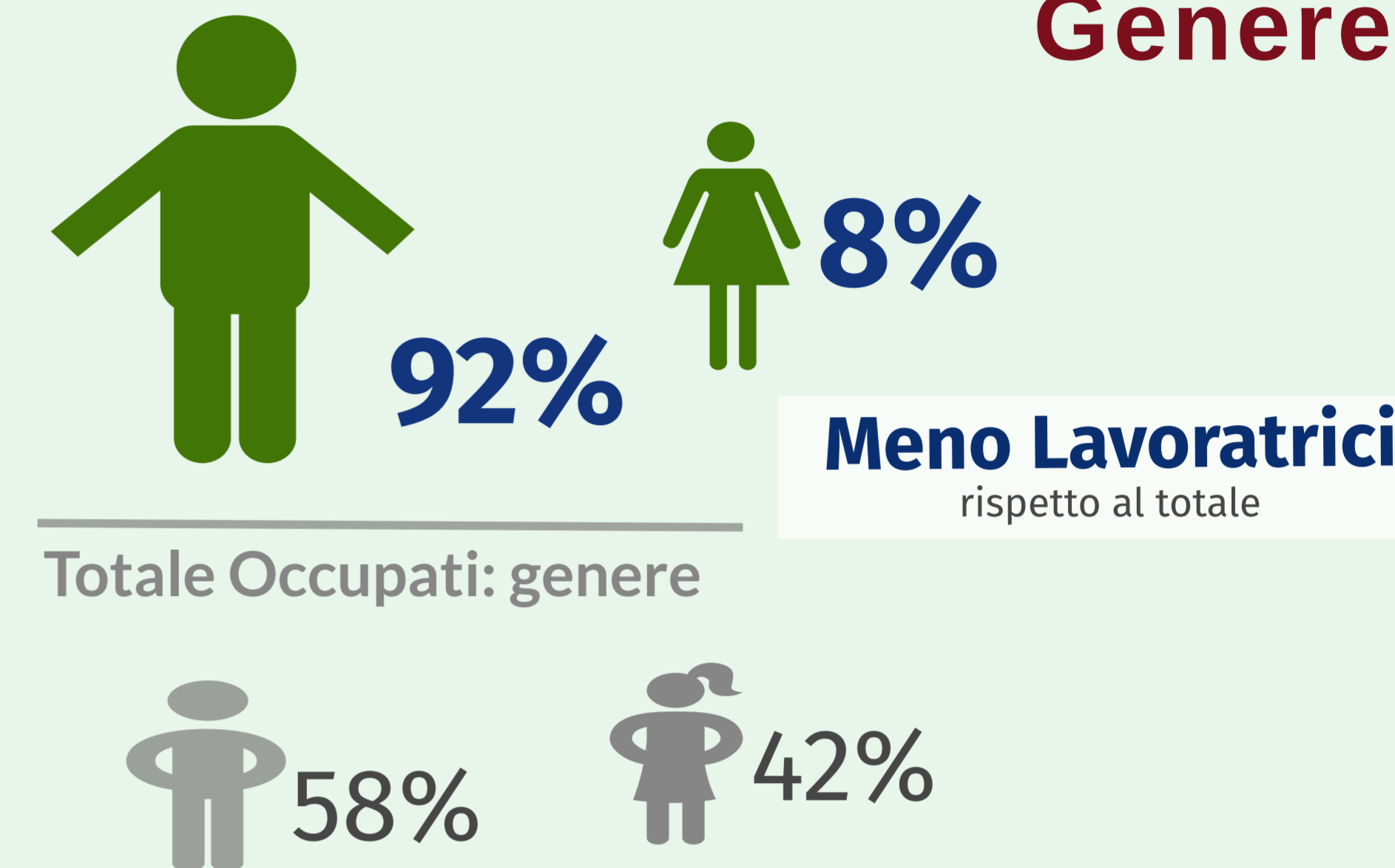
Età



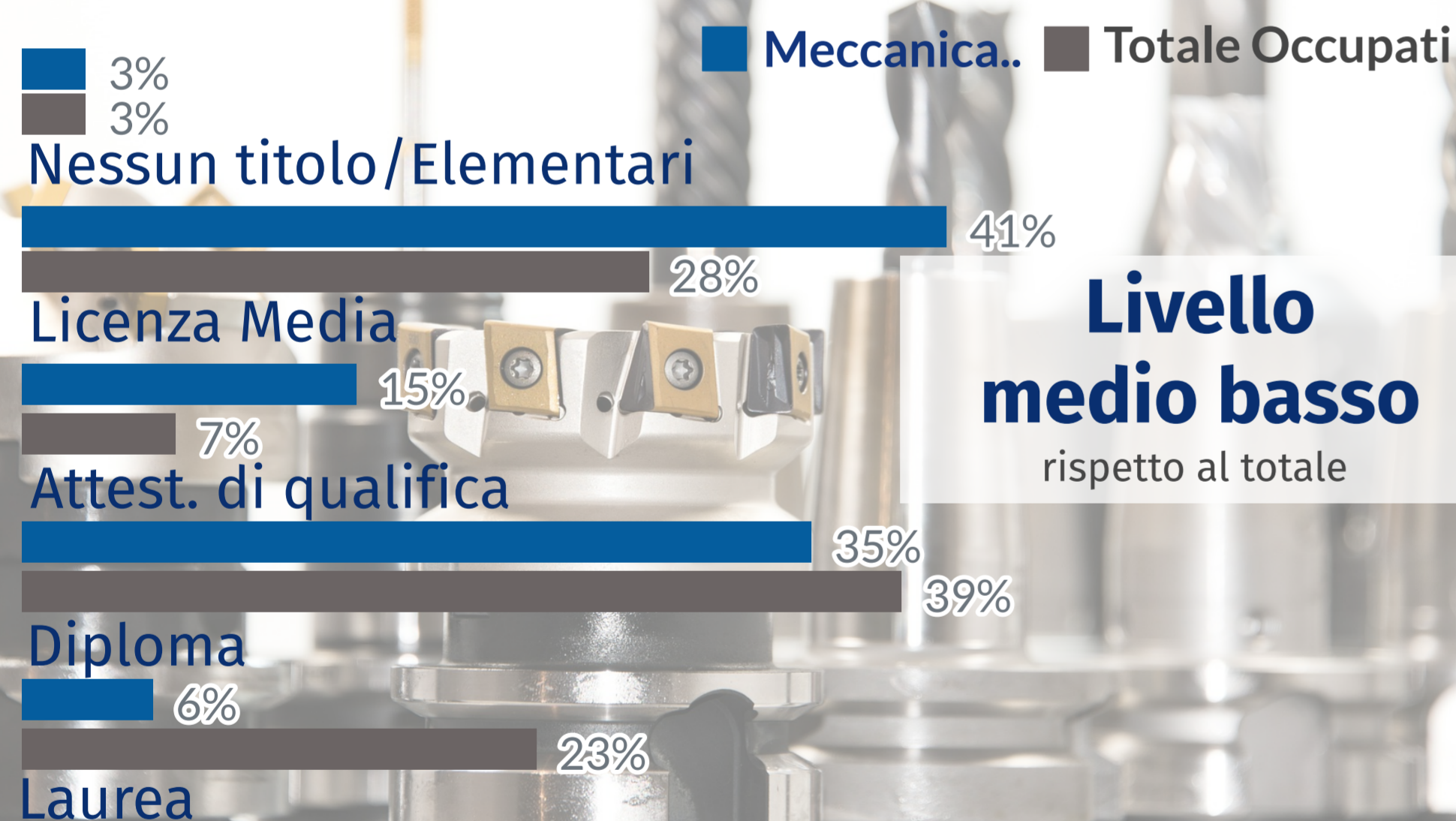
OCCUPATI



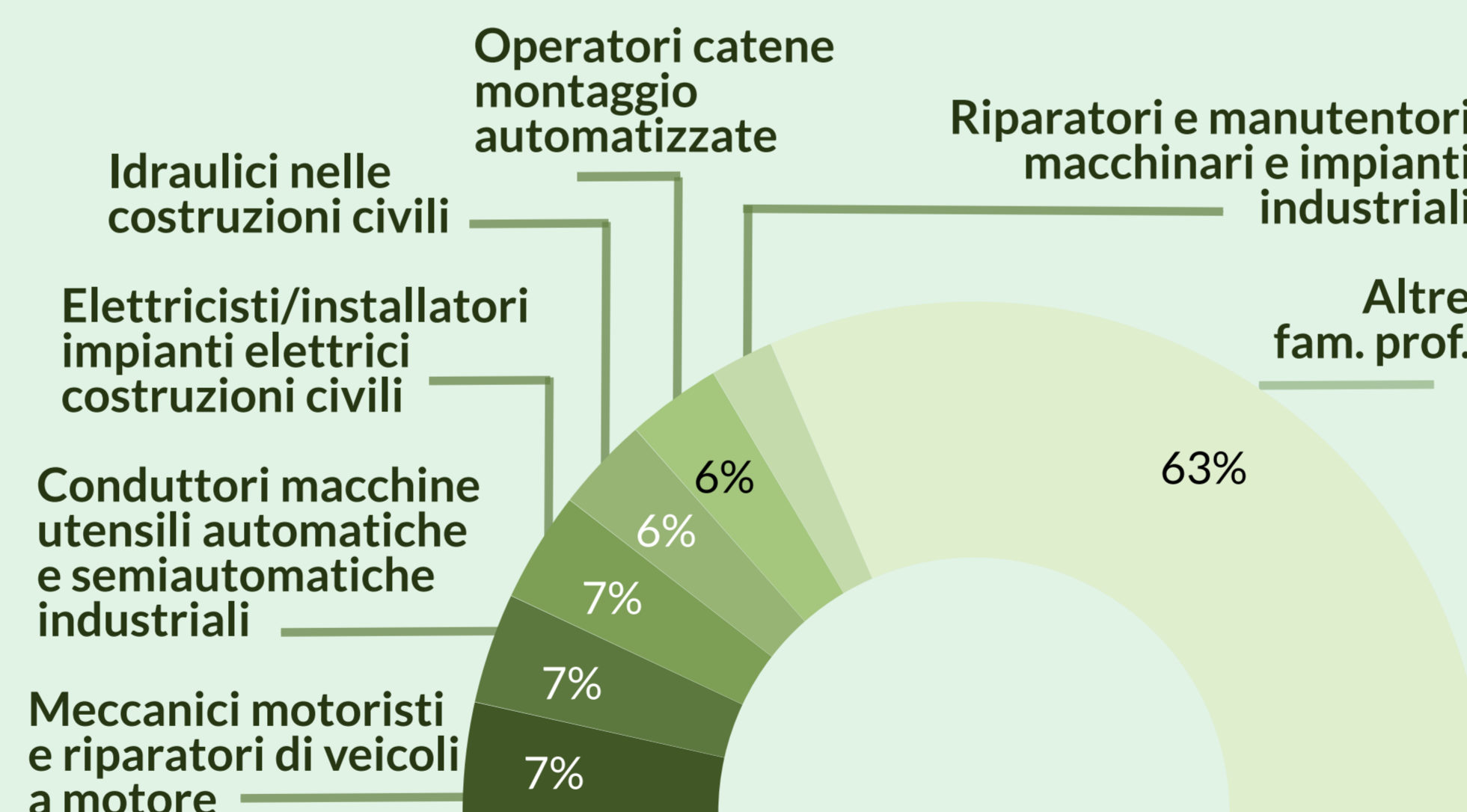
Genere



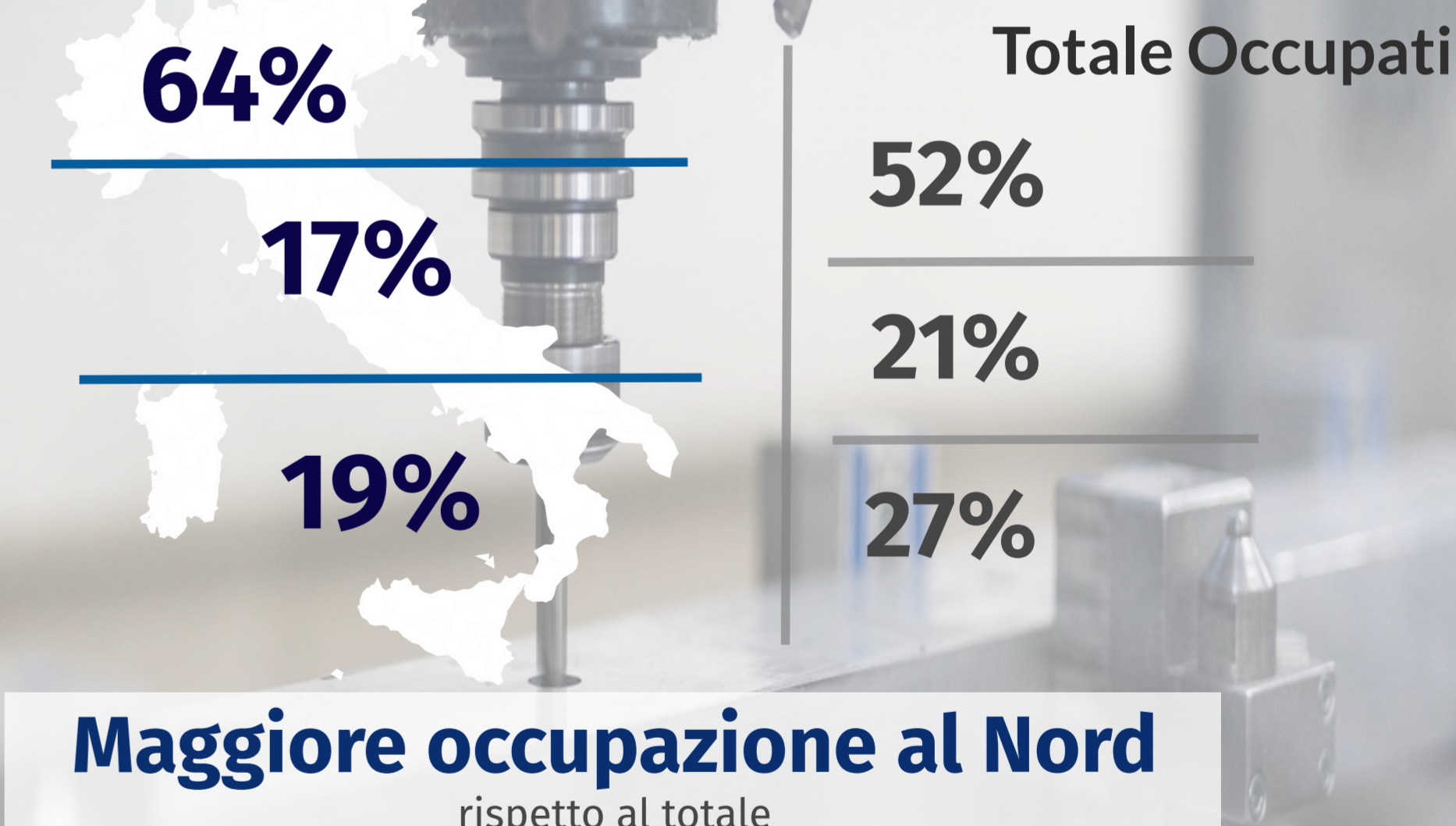
Livello Istruzione



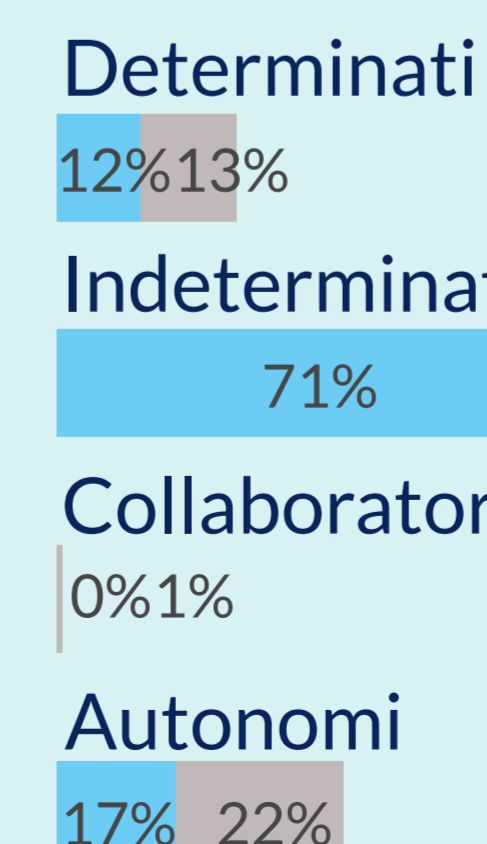
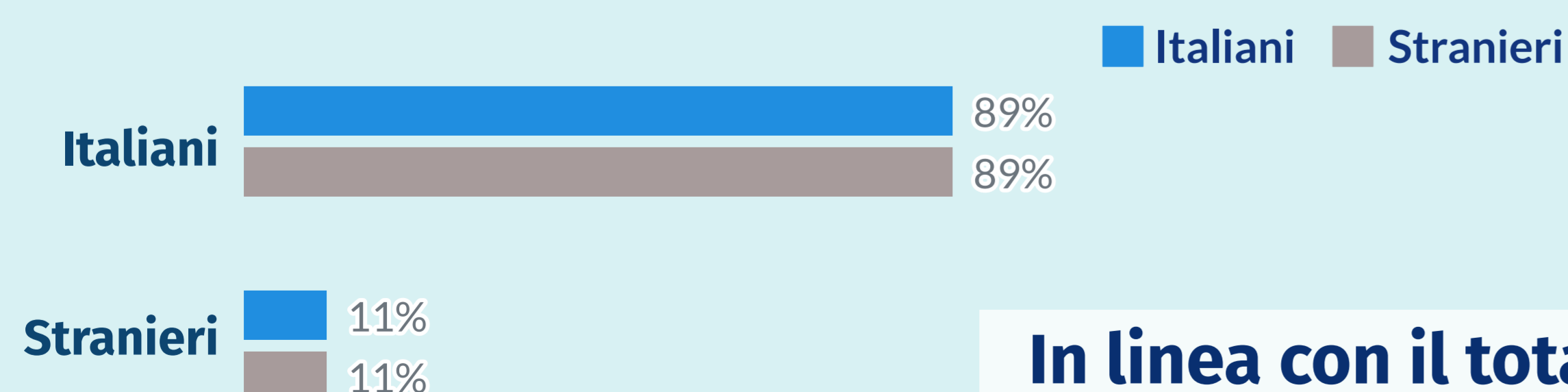
Famiglie Professionali



Area Geografica



Italiani / Stranieri



Tipologia Contratto

+ Indeterminati - Autonomi
rispetto al totale